

Natural mortality

fish5102stockcatch The development of a year-class

Gunnar Stefansson

December 19, 2016

The natural mortality rate

Fishing mortality and natural mortality need to be untangled.

The equation for total mortality can be written such that fishing and natural mortality are separate but linked:

$$Z_{ay} = F_{ay} + M_{ay}$$



Figure : Sources of natural mortality include predation, disease etc.

On natural mortality, M

ICSE/14 12/01 FISH LAB LON FAX NO. 800254511 P. 02
 50 4

APPROVED BY SCIENTIST
 International Commission for the Northwest Atlantic Fisheries

Serial No. 2005 JOURNAL MEETING - JUNE 1973
 1973 June, Vol. 21/2
 Estimation of Unknown Natural Mortality
 by
 J.A. Pope

$M = ?$
 $M = ?$
 $M = .2$
 $M = .2$
 $M = 0.2$
 EUREKA!!!

More on M

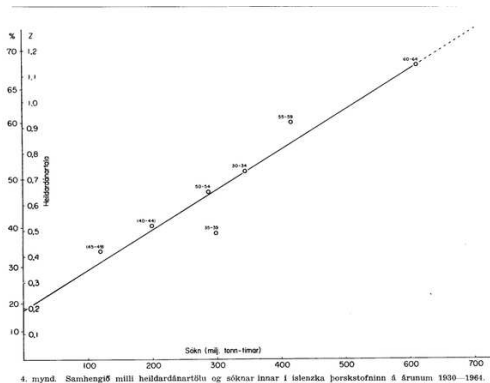


Figure : Z vs effort

Additivity of mortalities

Effects of different mortality rates