

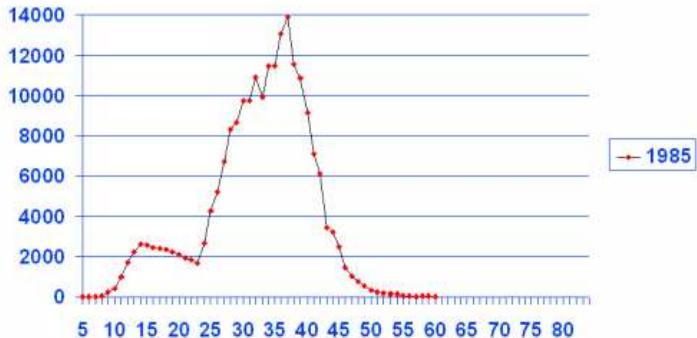
Case studies in analysis of length data

fish5103growth Modelling length at age and length distributions

Gunnar Stefansson and Lorna Taylor

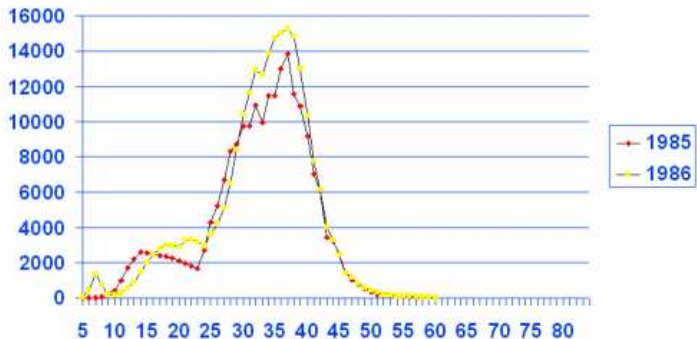
December 19, 2016

Two yearclasses or many: A case study, part 1

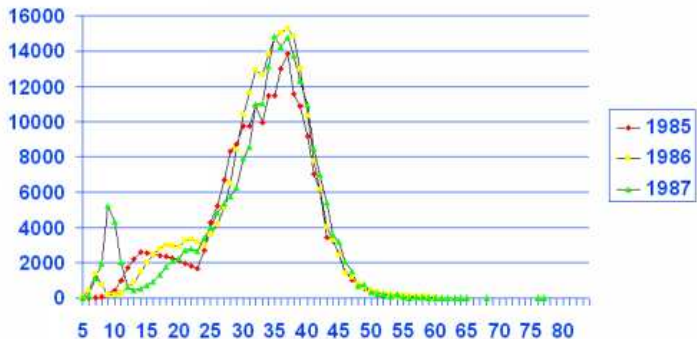


Are these cohorts, adjacent cohorts or...?
 The data come from a groundfish survey.

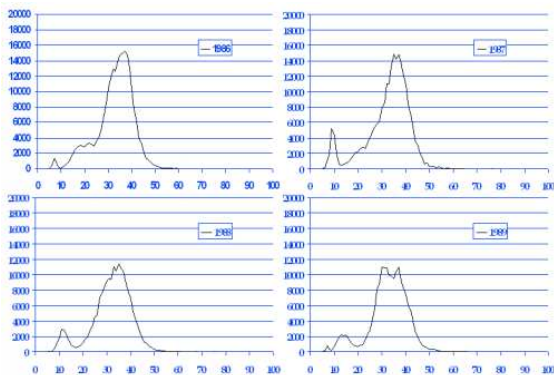
Two yearclasses or many: A case study, part 2



Two yearclasses or many: A case study concluded



Two yearclasses or many: The actual situation



* Redfish * Very slow growing * Reach high age